

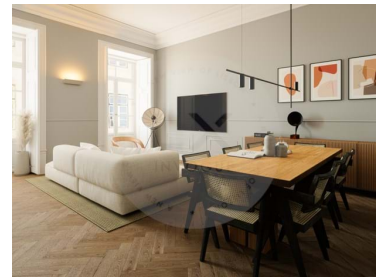
LX - 2103

Reference

Scan the QR code to view the property



Santa Maria Maior - Apartment



Bedrooms



Bathrooms



Area (m²)

690 000 €

(EUR €)

Six Guild - Douradores 6 - Living Starts Here

T2 with equipped kitchen located in the center of Lisbon, the SIXGILD building benefits from a privileged location, having been subject to a complete requalification. This building translates into a set of modern apartments, with tasteful finishes and providing exclusive environments, with all the charm that your life in the center of Lisbon will have.

The Apartments

LIVING STARTS HERE

Quality finishes, exquisite materials, high ceilings and elegant stucco, as well as excellent natural and artificial lighting, are just some of the predominant notes in the SIXGILD apartments.

The historic center of Lisbon (Baixa) is the perfect area for those who want to enjoy the city to the fullest, participating and interacting with Lisbon's historical and cultural heritage.

T +351 925 214 716 ² · T +351 212 841 814 ¹ · E info@lxinvogue.pt
Avenida 5 de Outubro, nº102 - 2º andar Sala J, 1050-060 Lisboa
AMI 10563

¹ (Call to national fixed network) | ² (Call to national mobile network)

LX - 2103

Reference

Scan the QR code to view the property



Around your new home you will find some of Portugal's most picturesque destinations, such as the Castle of São Jorge, Casa dos Bicos, Praça do Comércio and several museums, such as the Design Museum. In this neighborhood, charm and elegance will always be close to you.

Whether you're looking for the best cafes, the most heritage-rich shops, or just a leisurely stroll along the river, you'll find it all within walking distance of your new home. Some of these places are some of the most desirable in the whole country and will be waiting for you in your own neighborhood.

It is an invitation to get lost in the typical streets of the capital of Portugal and fall in love with the unique secrets that await you.

INTERESTED IN THIS PROJECT?

Contact us for more information.

Come and find out which of the apartments is best suited to what you are looking for (one to three bedroom units available) and get ready to start a new life, with all the elegance and charm you need.

Property Features

- Proximity: Airport, Restaurants, City, Pharmacy, Public Transport, Schools
- Built year: 2024
- Views: City view
- Double glazing
- Bathrooms (en-suite): 2
- Central location
- Security door
- Water: Main grid
- Terrace
- Kitchenette
- Lift
- Electric shutters
- Internet connection available
- Accessibility\proximity: Museums, Subway, Bus, Bus station, Airport 30m, Beach at 30 min, Commercial areas, Restaurants, Touristic areas, Cinema, Theater, Ruins with touristic views
- Balcony
- Gas: Main grid

T +351 925 214 716 ² · T +351 212 841 814 ¹ · E info@lxinvogue.pt
Avenida 5 de Outubro, nº102 - 2º andar Sala J, 1050-060 Lisboa
AMI 10563

¹ (Call to national fixed network) | ² (Call to national mobile network)