

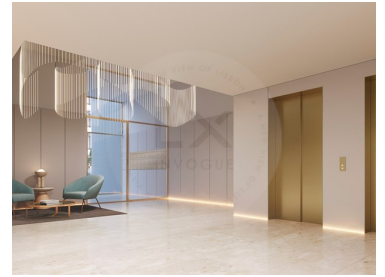
LX - 2199

Reference

Scan the QR code to view the property




## Alvalade - Apartment



 **3**  
Bedrooms

 **3**  
Bathrooms

 **150,12**  
Area (m<sup>2</sup>)

 **1**  
Garage

**1 675 000 €**  
(EUR €)

T +351 925 214 716 <sup>2</sup> · T +351 212 841 814 <sup>1</sup> · E [info@lxinvogue.pt](mailto:info@lxinvogue.pt)  
Avenida 5 de Outubro, nº102 - 2º andar Sala J, 1050-060 Lisboa  
AMI 10563

<sup>1</sup> (Call to national fixed network) | <sup>2</sup> (Call to national mobile network)

LX - 2199

Reference

Scan the QR code to view the property



## Property Features

- Heating
- Dishwashing machine
- Equipped kitchen
- Terrace
- Built year: 2025
- Communal parking
- Video entry system
- Double glazing
- Main drainage
- Parking places
- Extractor Fan
- Energetic certification: A
- Mains water
- Orientation: Exterior
- Washing machine
- Air conditioning
- Kitchen: Hob, Oven, Microwave, Washing machine, Exhaust, Water boiler, Combined
- Garage
- Private condominium
- Views: City view
- Lift
- Electric shutters
- Bathrooms (en-suite): 1
- Parking place type: Interior
- Accessibility\proximity: Museums, Subway, Bus, Bus station, Airport 30m, Commercial areas, Restaurants, Touristic areas
- Solar orientation: East
- Balcony

**T +351 925 214 716 <sup>2</sup> · T +351 212 841 814 <sup>1</sup> · E info@lxinvogue.pt**  
**Avenida 5 de Outubro, nº102 - 2º andar Sala J, 1050-060 Lisboa**  
**AMI 10563**

<sup>1</sup> (Call to national fixed network) | <sup>2</sup> (Call to national mobile network)