

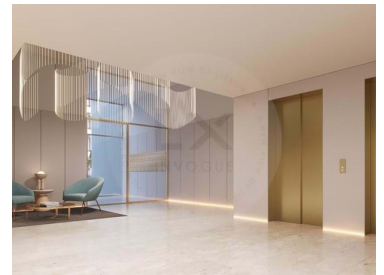
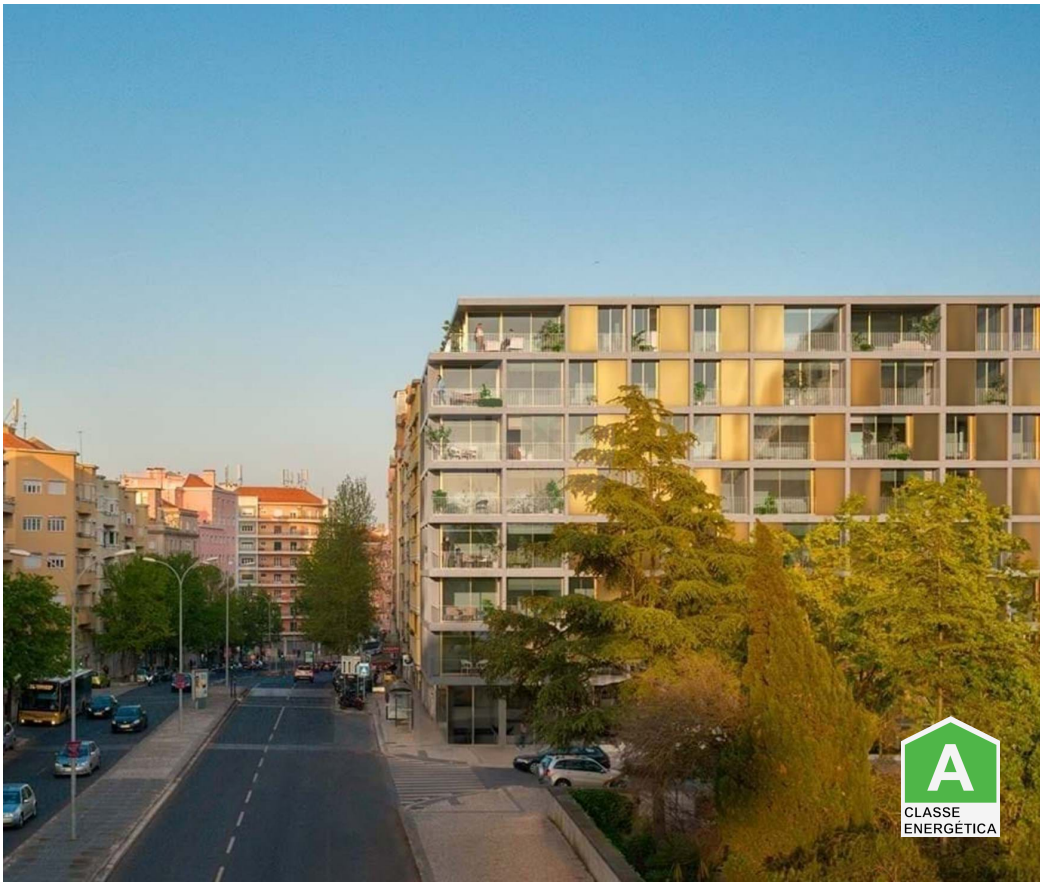
LX - 2201

Reference

Scan the QR code to view the property



## Alvalade - Apartment



Bedrooms



Area (m<sup>2</sup>)



Garage

1 750 000 €

(EUR €)

### Luxury furnished 3 bedroom apartment The One – Exclusivity and Sophistication in Lisbon

Spacious and bright 3 bedroom apartment with balcony, equipped kitchen, parking. The One is the most urban vision of Eduardo Souto de Moura's architecture. A unique creation of the Portuguese Pritzker designed to set a new standard of quality in Lisbon's residential offer. The privileged orientation, generous spaces and large glazed areas guarantee exceptional natural lighting, creating a perfect connection between the interior and the exterior environment.

Located on Avenida João XXI, it is one of the most important axes in Lisbon, offering a perfect balance between urban life and green spaces. Nearby, there is a wide range of services, culture and leisure, including parks, cultural centers, renowned restaurants and prestigious educational institutions.

T +351 925 214 716 <sup>2</sup> · T +351 212 841 814 <sup>1</sup> · E [info@lxinvogue.pt](mailto:info@lxinvogue.pt)  
Avenida 5 de Outubro, nº102 - 2º andar Sala J, 1050-060 Lisboa  
AMI 10563

<sup>1</sup> (Call to national fixed network) | <sup>2</sup> (Call to national mobile network)

LX - 2201

Reference

Scan the QR code to view the property



A few steps from Campo Pequeno and Avenida de Roma, surrounded by theaters, shopping centers, shops, restaurants and supermarkets, The One is ideal for those who value their time and want to live in style and comfort, without wasting time commuting. With easy access to the airport, metro, buses, schools and gardens, this is the place where everything happens and where urban life becomes more fluid and practical.

## Property Features

- Heating
- Dishwashing machine
- Equipped kitchen
- Terrace
- Built year: 2025
- Communal parking
- Video entry system
- Double glazing
- Main drainage
- Parking places
- Extractor Fan
- Energetic certification: A
- Mains water
- Orientation: Exterior
- Washing machine
- Air conditioning
- Kitchen: Hob, Oven, Microwave, Washing machine, Exhaust, Water boiler, Combined
- Garage
- Private condominium
- Views: City view
- Lift
- Electric shutters
- Bathrooms (en-suite): 3
- Parking place type: Interior
- Accessibility\proximity: Museums, Subway, Bus, Bus station, Airport 30m, Commercial areas, Restaurants, Touristic areas
- Solar orientation: East
- Balcony

**T +351 925 214 716 <sup>2</sup> · T +351 212 841 814 <sup>1</sup> · E info@lxinvogue.pt**  
**Avenida 5 de Outubro, nº102 - 2º andar Sala J, 1050-060 Lisboa**  
**AMI 10563**

<sup>1</sup> (Call to national fixed network) | <sup>2</sup> (Call to national mobile network)